

Pathways for Referral to Tier 4 Residential Addiction Services from HSE Addiction Services or Section 39 Funded agencies

2018

The HSE has funded a number of National Tier 4 residential treatment beds/treatment episodes within Voluntary Section 39 agencies. (See *appendix*)

The national treatment beds are allocated pro-rata across the nine CHO areas in the country.

The Four-Tier Model of Care implies that clients should be offered the appropriate intervention for their stage in their addiction.

For access to a HSE funded treatment episode in a Tier 4 section 39 funded agency, a comprehensive assessment needs to be undertaken within a HSE Tier 3 addiction service or a HSE funded Tier 3 addiction service, which includes the minimum standard domains agreed by the National Drugs Rehabilitation Implementation Committee.

Referral pathway (see also, *algorithm on next page*)

For access to HSE funded treatment episode in a Tier 4 service listed in appendix it is essential that the following has been undertaken:

- ✚ A comprehensive assessment has been undertaken by competent staff or multi-d team within a HSE Tier 3 addiction service or a HSE funded Tier 3 addiction service, which includes the minimum standard domains outlined in the National Drug Rehabilitation Framework.¹
- ✚ The outcome of this assessment shows that the referral is appropriate and the individual meets the criteria for Tier 4 service provision
- ✚ The referring agency has confirmed with named contact person for funding requests (see contact details below for CHO 6 & 7) that a HSE funded bed is available.
- ✚ A pre-treatment and post treatment care plan is agreed between the client, the referring agency and the Tier 4 residential service
- ✚ The Tier 3 referring service contacts named HSE contact person for funding requests when a client is admitted and discharged from the Tier 4 service

Take up will be reviewed by the National Social Inclusion office and by the SLA/GAA holders to ensure that all funded places are utilised

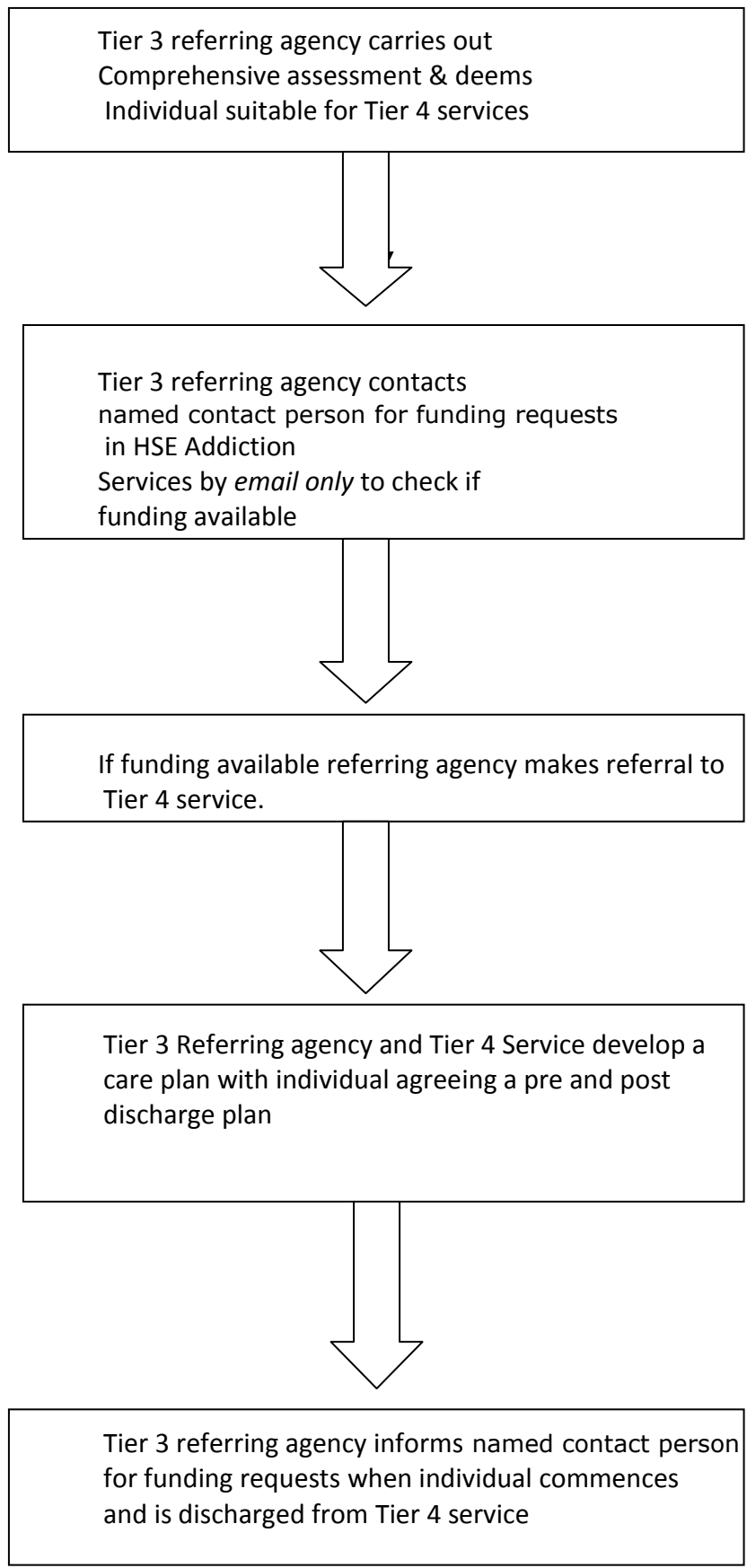
Where a CHO area does not require/utilise its full allocation of treatment places these will be reallocated on the basis of need to other CHO areas.

Named contact persons for referrals CHO Areas 6&7:

Angela Tierney

Rehabilitation Manager: angela.tierney1@hse.ie

¹ *National Protocols & Common Assessment Guidelines to Accompany the National Drugs Rehabilitation Framework*
National Drugs Rehabilitation Implementation Committee November 2011



Appendix I

| Tier 4 Service | Type |
|--|------------|
| Cuan Mhuire (Across Services) | Long Stay |
| Cuan Mhuire (Across Services) Detox & Rehab | Long Stay |
| Merchants Quay Ireland St. Francis Farm Detox | TC |
| Merchants Quay Ireland St Francis Farm Rehab | TC |
| Merchants Quay Ireland High Park Rehab | TC |
| Coolmine Ashleigh House Women Detox | TC |
| Coolmine Ashleigh House Women Rehab | TC |
| Aiseirí Group Aislín, Detox & Rehab | Adolescent |
| Aiseirí Group Cahir, Co. Tipperary. Detox | Short Stay |
| Aiseirí Group Cahir, Co. Tipperary. Rehab | Short Stay |
| Aiseirí Group Roxborough, Wexford. Rehab | Short Stay |
| Aiseirí Group Céim Eile, Waterford | Step Down |
| Tabor Lodge, Belgooly, Cork. Rehab | Short Stay |
| Fellowship House, Togher, Co. Cork | Step Down |
| Renewal Women's Service | Step Down |
| Talbot Grove, Castleisland, Co. Kerry. Rehab | Short Stay |
| Bushy Park Rehab, Ennis, Co. Clare | Short Stay |
| Hope House Rehab, Foxford, Co. Mayo | Short Stay |
| White Oaks Rehab, Muff, Co. Donegal | Short Stay |
| Peter McVerry Trust, Detox & Rehab | Short Stay |
| Peter McVerry Trust | Step Down |
| Tabor House Navan | Step Down |
| Suamhneas | Step Down |
| Dublín Simon Detox | Short Stay |
| Dublín Simon HIV Respite Stabilisation | Short Stay |
| Rutland Rehab | Short Stay |